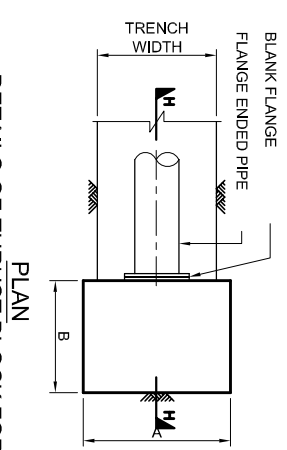


DETAILS OF THRUST BLOCK FOR TEE
PLAN



DETAILS OF THRUST BLOCK FOR END CAP
PLAN

DETAILS OF ANCHOR BLOCK


TABLE FOR ANCHOR BLOCK	
GRADIENT EXCEEDING	ANCHOR BLOCK
1 : 12	EVERY THIRD PIPE
1 : 8	EVERY SECOND PIPE
1 : 5	EVERY PIPE

TABLE FOR CONCRETE THRUST BLOCK FOR TEE

PIPE OD (mm)	PIPE ND (mm)	A (mm)	B (mm)	C (mm)
125 x 125	100 x 100	750	500	500
180 x 125	150 x 100	800	550	550
180 x 180	150 x 150	800	700	650
225 x 125	200 x 100	850	600	600
225 x 180	200 x 150	850	700	600
225 x 225	200 x 200	850	950	850
280 x 125	250 x 100	900	650	650
280 x 180	250 x 150	900	650	650
280 x 225	250 x 200	900	900	800
280 x 280	250 x 250	1000	1300	1000
355 x 125	300 x 100	950	700	700
355 x 180	300 x 150	950	700	700
355 x 225	300 x 200	950	850	800
355 x 280	300 x 250	950	1300	950
355 x 355	300 x 300	1100	1700	1100

TABLE FOR THRUST BLOCK FOR END CAP

PIPE OD (mm)	PIPE ND (mm)	A (mm)	B (mm)	C (mm)
125	100	600	300	500
180	150	700	350	600
225	200	900	450	900
280	250	1250	650	950
355	300	1600	800	1000



 SURJAHANJAYA PERKOHIMATAN AIR NEGARA
 Asean Park 4, Jln. Sidi
 Prima Avenue, Blok 3510
 Jalan Terasdarat 6,
 Semangco, Peringkat 6,
 Sempang Permai Bisen, Malajejo

PREPARED BY :
MINCONSULT SDN. BHD.
 No. 6, JALAN SIA/223,
 46100 PETALING JAYA,
 SELANGOR DARUL EHSAN, MALAYSIA.
 T E L : 03-7571512 / 79541373
 F A X : 03-7571513 / 79541373

DRAWING TITLE :
**DETAILS OF CONCRETE THRUST
 BLOCK AND ANCHOR BLOCK
 SHEET 2 OF 2**

DRAWING NO :
SPAN/WS/STD/IF/011